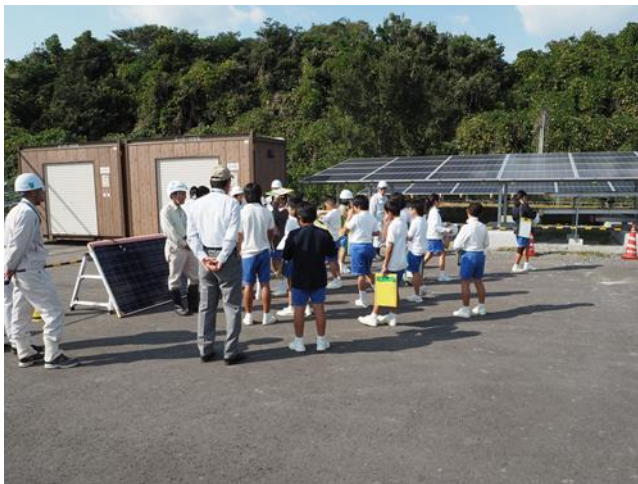


October 13th, 2015

Press Release

Ushimado Kita Elementary School Visits SetouchiKirei Solar Power Project Site

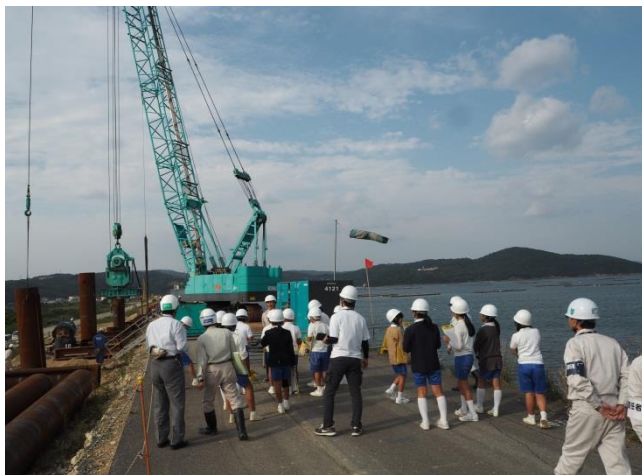
On October 8th, 17 six-graders from Ushimado Kita Elementary School visited the construction site of the Setouchi Kirei Solar Power Project. These students have always been seeing the construction from their classroom windows, but on this day they were able to see it happening just in front of their eyes.



The tour started by our site staff explaining how the PV power system works, using the full-size panel and mounting structure model built at a corner of the site, provided that the panels and the mounting structures are not being installed at the site yet. (Photo on the top)

Then the students saw the steel pipe sheets being piled by a machine on the embankment along the shore at the site. In order to protect the site from earthquakes, tsunami or swellings, the project is fortifying the embankment. (Photo in the bottom left)

Also, they were able to see the construction of the concrete foundation for the panel mounting structures. (Photo in the bottom right)



We hope to contribute to young children leaning social study and science through more tours of the solar project's construction site and continue to give back to the local community.

Setouchi Future Creation LLC invested by GE Energy Financial Services, Toyo Engineering Corporation, Chudenko Corporation and Kuni Umi Asset Management, is now constructing the Setouchi Kirei Solar Power Plant on approx. 265 hectares out of approx. 500 ex-salt field site, targeting operation starts in the spring of 2019. It concluded the Implementation Agreement and Land Lease with City who owns the site land. The SPC promotes the business considering not only the spread of renewable energy but also the development of the area, safety and security and symbiosis with nature.



Conceptional drawing of Setouchi Kirei Mega Solar Power Plant

Setouchi Future Creations LLC	
(1) Location of HQ	4382-3 Shirimi, Okucho, Setouchi-shi, Okayama
(2) Senior Partner	Kuni Umi Asset Management Co. Ltd.
(3) Date of Foundation	August 17, 2012
(4) Website	www.setouchimegasolar.com

【Investors】

GE Energy Financial Services (Parent Company of EFS Japan B.V.)	
(1) Location of HQ	800 Long Ridge Road Stamford, CT 06927 U.S.A.
(2) Representative	David Nason, President and CEO
(3) Business	GE Energy Financial Services
(4) Date of Foundation	2004
(5) Capital	16 Billion USD (as of Dec. 31, 2014)

Toyo Engineering Corporation	
(1) Location of HQ	2-8-1, Akanehama, Narashino-shi, Chiba
(2) Representative	Kiyoshi Nakao, President & CEO
(3) Business	Engineering and construction for industrial facilities
(4) Date of Foundation	May1,1961
(5) Capital	18.1 Billion JPN Yen (as of Mar. 31, 2015)

Chudenko Corporation

(1) Location of HQ	6-12, Koamicho, Naka-ku, Hiroshima-shi, Hiroshima
(2) Representative	Hirofumi Obata, President and Representative Director
(3) Business	Engineering and construction for electric facilities
(4) Date of Foundation	September 29, 1944
(5) Capital	3.48 Billion JPN Yen (as of Mar. 31, 2015)

Kuni Umi Asset Management Co. Ltd.

(1) Location of HQ	3rd Floor Nippon Oil Building, 3-4-2, Marunouchi, Chiyoda-ku, Tokyo
(2) Representative	Yasuyo Yamazaki, President & CEO
(3) Business	Power generation of renewable energy and ideal region development
(4) Date of Foundation	February 16, 2012
(5) Capital	250 Million JPN Yen (as of April 1, 2015)